

Is the Batch Up Yet?:
*San Jose State University's
PASS Implementation*

Presented by:
San José State University

2005 HEUG Conference - Las Vegas
Session 10271



San José State
UNIVERSITY





Presenters

Paul Hofmann

SEVIS Compliance Coordinator
Registrar Services
San José State University

Chuck Wu

Programmer/Analyst
Academic and Enrollment Services
San José State University

March 23, 2005

2005 HEUG Conference – Las Vegas

Session 10271





SJSU Facts and Figures

- Founded in 1857, SJSU is the oldest public IHE on the west coast
- Approximately 30,000 students
- 1,500 international students



The CSU System



- One of 23 campuses in the California State University System. All universities are implementing PeopleSoft.



SJSU PeopleSoft Facts

- HRSA 8.0 (upgrade to HCM 8.9 in progress)
 - Position Management, Administer & Recruit Workforce, Time & Labor, Base Benefits, Administer Training
 - Admissions, Records, Financial Aid, Student Financials, Academic Advising
 - Employee Faculty and Student Self-Service
 - Users
 - 400+ staff users
 - 2,000+ faculty users
 - 30,000 student users + 25,000+ applicants





SJSU PeopleSoft Facts

- Financials 8.4
 - General Ledger, Accounts Payable, Procurement, Custom Web Component
 - Users
 - 400+ staff users
- PeopleSoft Portal
 - Employee, Faculty and Student Self-Service
 - Users
 - 400+ staff users
 - 2,000+ faculty users
 - 30,000 student users + 25,000+ applicants



- Common Management Systems (CMS)

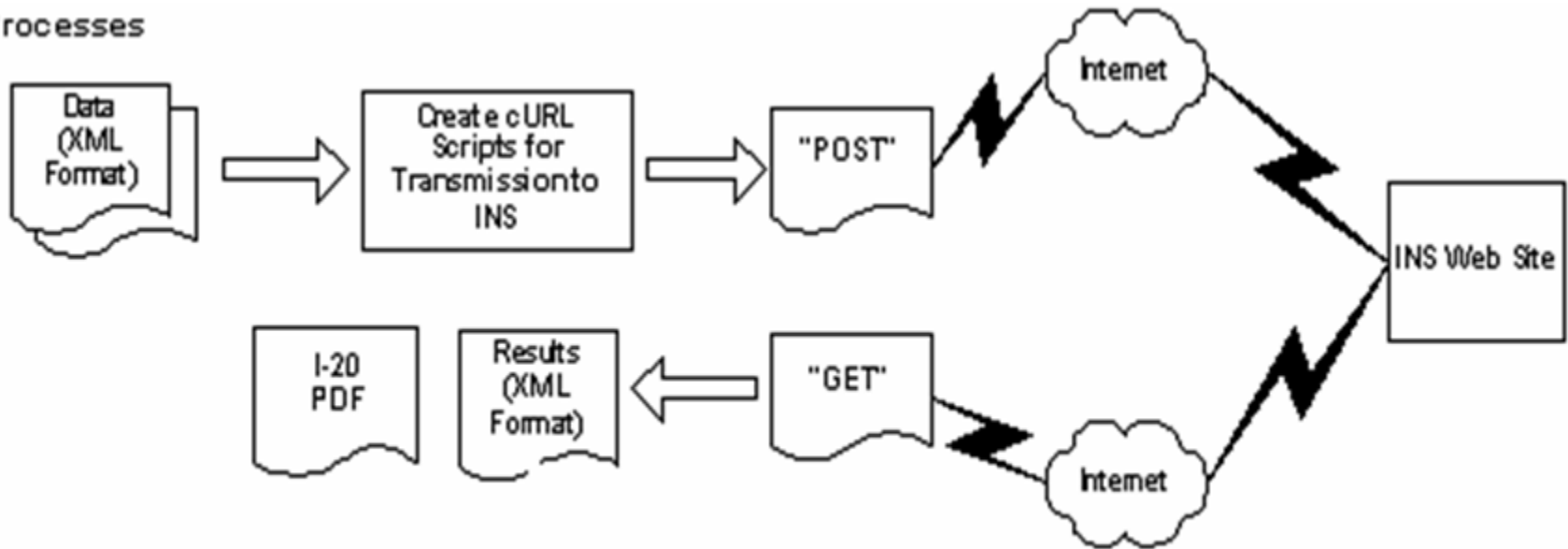
- HR
- Finance
- Student Administration
- **Chancellor's Office (Not a Campus) Provides:**

- Application/Implementation Support for campuses—**NOT A CAMPUS**
- PS Bundles/Patches/Fixes & System-wide Modifications
- Development, testing & QA
- Baseline Releases posted to web
- Campus downloads Releases into Test instance(s)
- Campus requests DBAs apply to Production



CMS's SOLUTION FOR SEVIS

Custom Processes



cURLEd and UNzipPED



CSU-SEVIS– Components

- SQR
 - Organizes batch
 - Creates scripts
 - Executes scripts to send and receive data
 - Logs and reports errors.
- cURL
 - Sends encrypted data.
- OpenSSL
 - Secure-Socket-Layer communication to a secured website.
- Verisign Certificate
 - Authenticates the integrity of data sent and received.





CSU-SEVIS–Components Details

- **CSUCC000.SQR**
 - Creates cURL scripts
- **CSUCC001.SQR**
 - Executes:
 - “post”: transmits the XML file
 - “process”: tells SEVIS to process the current batch
- **CSUCC002.SQR**
 - Executes:
 - “get”: initiates SEVIS to receive a batch result
 - “unzip”: Decompresses the batch result, which will include I-20 forms(s) and XML data for importing back to PS SA. This process will also log process errors.
- **CSUCC003.SQR**
 - Verifies students’ ID’s in the XML file.





CSU-SEVIS Modifications

- Delivered by the Chancellor's Office
- User-Friendly with Desktop access
- Feed from Existing (PS) Setup
- Minimal Technical Maintenance
- Minimal PS Modification





cURLed and UNzipPED

More information on the CSU-SEVIS Solution is Available on the HUEG Website

Section # 10275

Tuesday, March 9, 2004

HUEG 2004 Conference - Atlanta

Presented by Jennifer Turpin and
Marlene Rosenthal

March 23, 2005

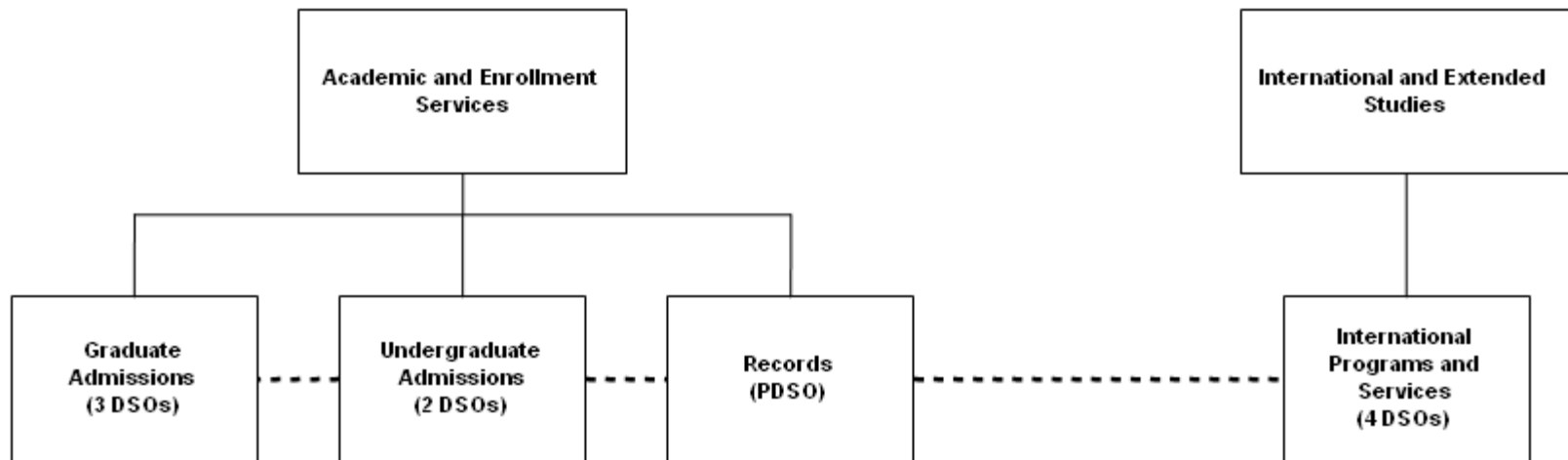
2005 HEUG Conference – Las Vegas

Session 10271





SJSU's SEVIS Workgroup





Processing Responsibilities

- Admitting Units
 - Admissions & Graduate Studies
 - CreateStudent Events
 - Initial Attendance I-20s
 - Initial Status – Change of Status Requested
 - Transfer I-20s
 - Change of Level I-20s





Processing Responsibilities

- International Programs and Services
 - AddDependent
 - AuthDropBelowFC
 - CreateStudent (COS requests and initial attendance I-20s for existing students)
 - ExtendProgram
 - NewCPTEmployment
 - OPTRequest
 - OffCampusEmploy
 - TerminateStudent/Dependent
 - Full Course Exceptions
 - Reinstatement Requests





Processing Responsibilities

- Records
 - Lead Coordination Role
 - Maintains Program/Plan and Batch Processing
 - Disseminating and Sharing Information
 - SEVIS Reporting
 - StudentRegistration
 - EditProgramInfo
 - EditPersonal





Peripheral Groups

- Groups with which information is shared.
 - Human Resources
 - Bursar's Office
 - Academic Advising
 - IT/CMS Team





Implementation - Stage 1

- Conversion from SIS to PS in August 2003.
 - Lots of Cleanup. Lots of Bad Data.
 - Coincided with BCIS (now USCIS) deadline for having all students entered in SEVIS.
 - Decision was made to enter all existing students in SEVIS via RTI.
 - Decision was made to take a double data entry approach for new students.





Implementation - Stage 2

- **October - December 2003**
 - Formed a SEVIS Workgroup
 - Working with the Chancellor's Office to complete setup of PASS.
 - Entering all current students in PASS.
 - Data verification
 - Insuring all SEVIS required info was in PS (Addresses, Birth Information, Visa, Citizenship, etc.)
 - Building I-20s in PASS for all continuing students
 - Building the SEVIS Master





Implementation - Stage 3

- January - June 2004
 - Completed testing and went live with our batch processing in January 2004.
 - Synchronized the SEVIS Master with SEVIS (ongoing project)
 - Began batching employment authorizations in March 2004.



Lessons Learned

- Formation of a SEVIS Workgroup (Planning)
 - Should be formed prior to implementation
 - All required decision-making staff represented
 - Input from end-users
- Interdepartmental/institutional Communication (Collaboration)
 - Communication with all affected staff for procedural changes
 - Compile information on timing and duration of processes
 - Data verification/readiness
 - Master in synch with RTI
 - All SEVIS info entered in PS.
(Addresses, Birth Information, Visa, Citizenship, etc.)



Looking Ahead

- SEVIS 5.0 scheduled for release in June 24, 2005
 - incorporate J-1s into batch processing
- Implementation of PS 8.9 tentatively scheduled for early 2006.
- Integration of electronic I-20s into the University's central image repository offering campus-wide access.





NOLIJ Imaging System

The screenshot shows a web browser window titled "NoliWeb_Main - Microsoft Internet Explorer". The address bar shows "SSN: N0292020" and "Last Name: Woods". Below the address bar are input fields for "First Name: James" and "MI: G". A dropdown menu for "Financial Assistance Record Storage" is visible. The main content area is divided into three sections: "Query Results" on the left, "Folder Objects" in the middle, and "System Objects" at the bottom. The "Query Results" section shows a list of 22 records, all named "Woods, James". The "Folder Objects" section is empty, and the "System Objects" section shows a table with one row: "Sample", 9 KB, JPE, 2002/05/31. A large grey area on the right side of the browser window contains the text "I-20 placement holder".

March 23, 2005

2005 HEUG Conference – Las Vegas

Session 10271





Questions?

Thank you for attending our
presentation.

March 23, 2005

2005 HEUG Conference – Las Vegas

Session 10271

